

4G/5G Desk Mount MiMo Antenna

DMM-6-60[-VAR]

PANORAMA ANTENNAS



4G/5G MiMo Portable Antenna

- Provides 2x2 MiMo function for 5G/4G with fallback to 3G/2G
- Ultra Wideband: 617-960/1710-6000MHz
- Desk, window or wall mount
 - Highly portable - features integral desk stand and suction mount
 - For more permanent use - screw and adhesive pad mounting options are also provided
- Supplied with 2m (6') of twin coaxial cable and available with SMA or TS9 connectors.

The DMM antenna is an innovative and future proof solution for 2G/3G/4G and 5G networks. Incorporating two separately fed, ultra wide band elements in a single housing, the DMM provides effective 2x2 MiMo function for frequencies from 617-960/1710-6000MHz.

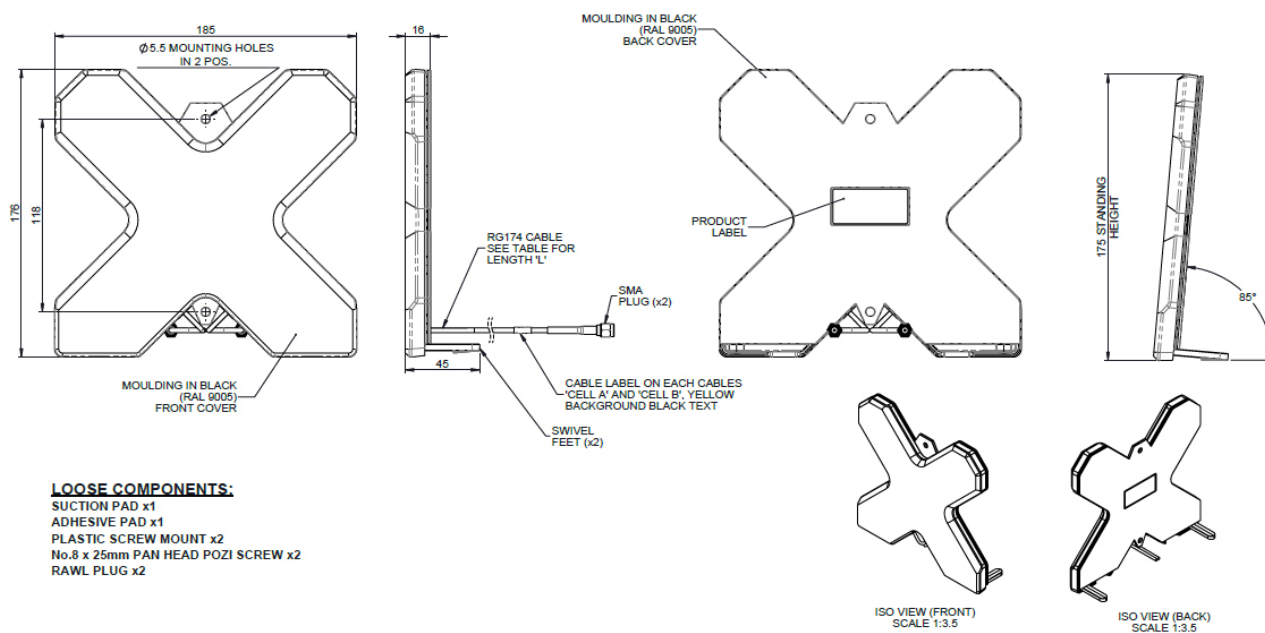
The DMM is highly portable and features desk mount feet which fold out for use, and flat for transport. A handy suction window mount enables users to optimise their signal in multiple locations, with instant installation and easy removal. For more permanent use, screw and adhesive pad mounting options are also provided.

Supplied with 2m (6') of twin coaxial cable and available with SMA or TS9 connectors.

The DMM is a cost effective value added product for network operators and service providers ensuring a stable link with improved data rates for subscribers thereby improving satisfaction and retention.

Technical Drawing

DMM-6-60-2SP Shown



4G/5G Desk Mount MiMo Antenna

DMM-6-60[-VAR]

PANORAMA  ANTENNAS

Product Data

Part No.		
		DMM-6-60-2SP
		DMM-6-60-2TS9
Electrical Data		
Frequency Range (MHz)	Antenna 1	617-960 / 1710-6000
	Antenna 2	617-960 / 1710-6000
Operational Bands		2G / 3G / 4G / 5G
Radiation Pattern		Omni-directional
Typical VSWR		< 2.5:1
Peak Gain - excluding cable loss (all bands)	698-960MHz	2dBi
	1710-2600MHz	3dBi
	3.4-6.0GHz	5dBi
Efficiency - excluding cable loss (all bands)		> 80%
Correlation Co-efficient (all bands)		< 0.1
Element Isolation		> 12dB
Max Input Power (W)		20 Watts
Impedance		50Ω
Mechanical Data		
Dimensions (mm)	Height	176.3 (6.94")
	Width	184.6 (7.27")
	Depth	14 (0.55")
Operating Temp (°C)		-40° / +80°C (-40° / 180°F)
Material		U.V. Stabilised ASA
Colour		RAL9005 (Jet Black)
Weight		250g
Mounting Data		
Fixing		Desk mount / screw mount / window mount
Cable Data		
Type		2 x RG174
Diameter (mm)		2.8 (0.1")
Length (m)		2 (6.5')
Termination		2 x SMA (m)

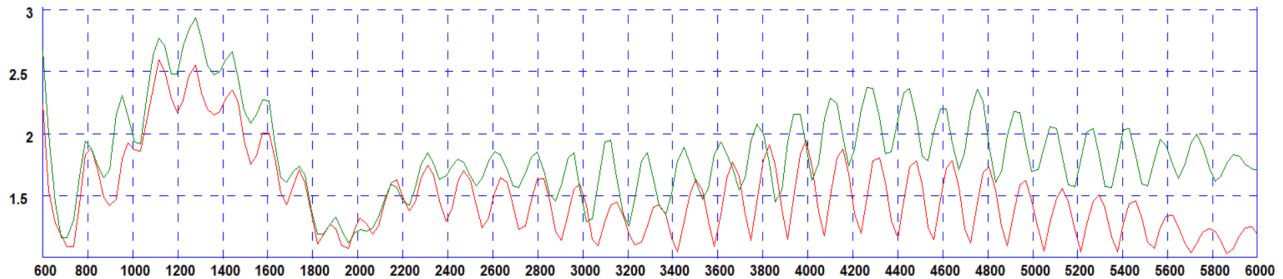
† Peak gain measured in free space and excludes cable loss.

* Typical VSWR measured in free space with 2m (6') of RG174 cable.

www.lucom.de

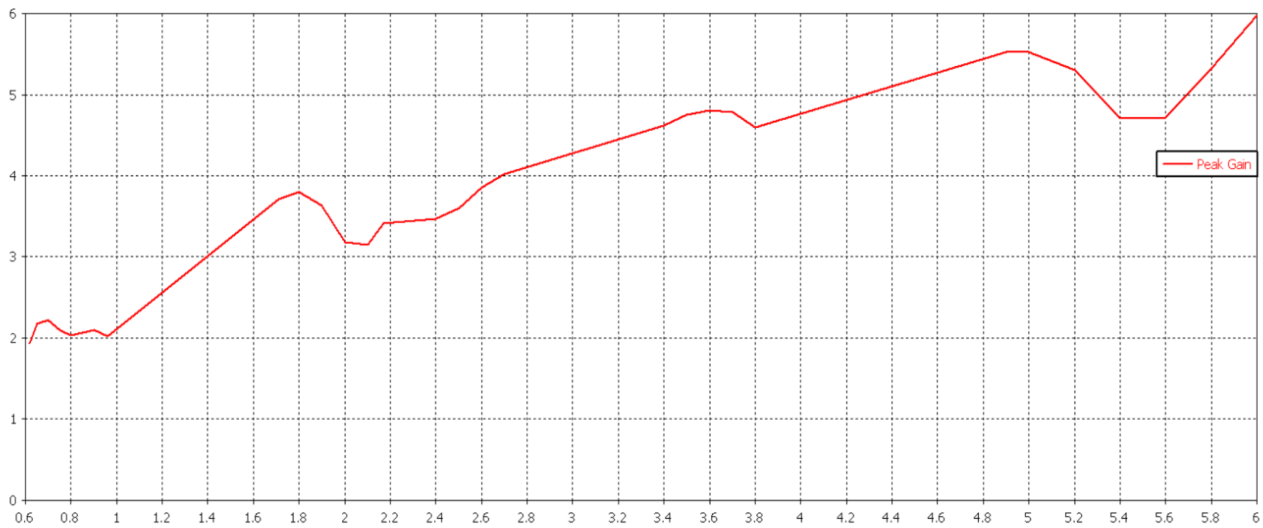
Electrical Data - Cell

Typical VSWR*



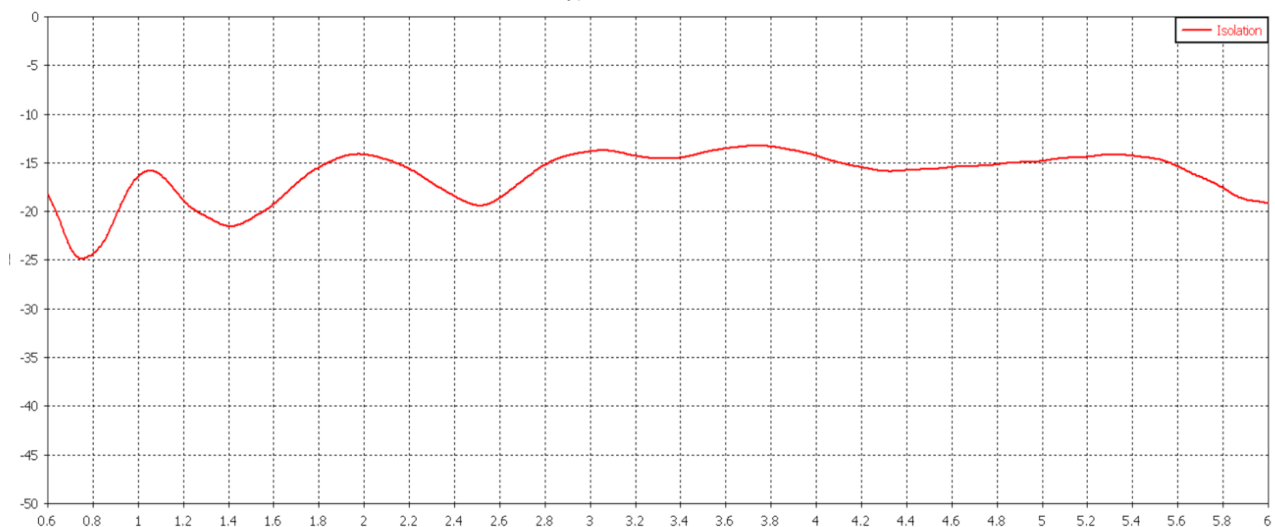
*VSWR elements 1&2 measured in free space with 1m (3') of CS29 cable

Swept Peak Gain **



**Swept peak gain simulated in CST Microwave Studio without cable loss

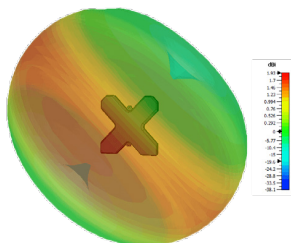
Typical Isolation ***



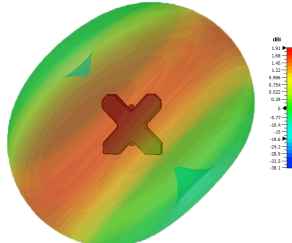
***Typical isolation simulated in CST Microwave Studio without cable loss

3D Patterns - Cell

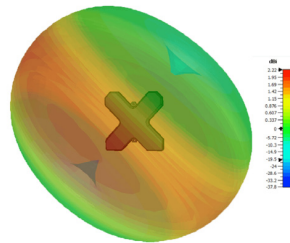
3D Pattern Element 1 (617MHz)



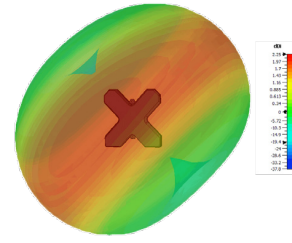
3D Pattern Element 2 (617MHz)



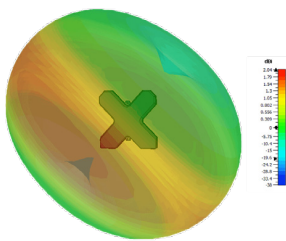
3D Pattern Element 1 (700MHz)



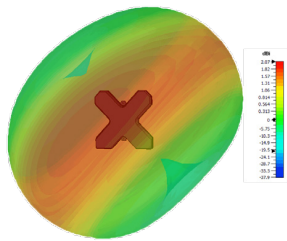
3D Pattern Element 2 (700MHz)



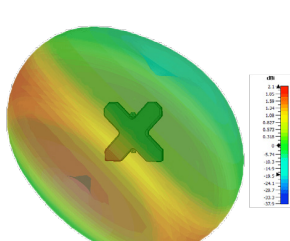
3D Pattern Element 1 (800MHz)



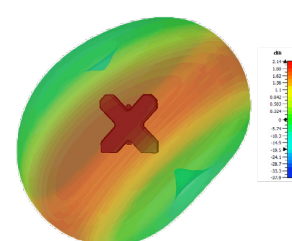
3D Pattern Element 2 (800MHz)



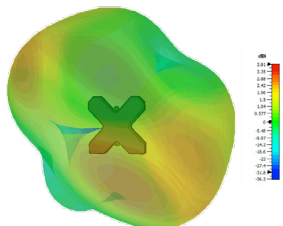
3D Pattern Element 1 (900MHz)



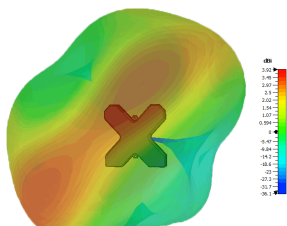
3D Pattern Element 2 (900MHz)



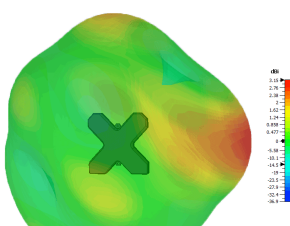
3D Pattern Element 1 (1800MHz)



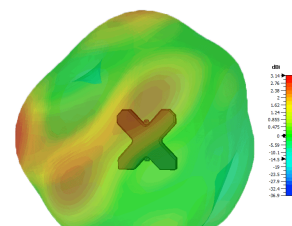
3D Pattern Element 2 (1800MHz)



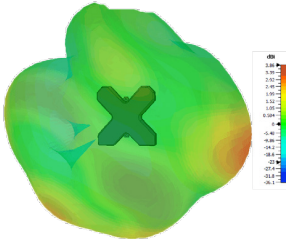
3D Pattern Element 1 (2100MHz)



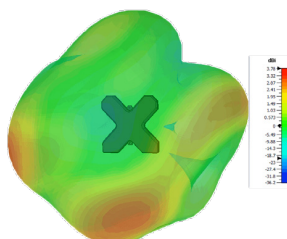
3D Pattern Element 2 (2100MHz)



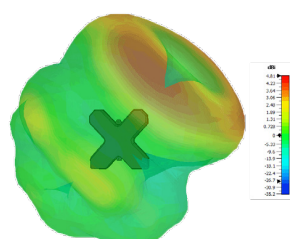
3D Pattern Element 1 (2600MHz)



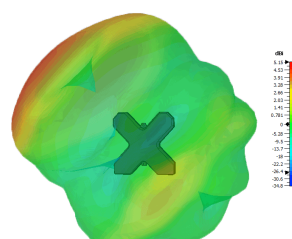
3D Pattern Element 2 (2600MHz)



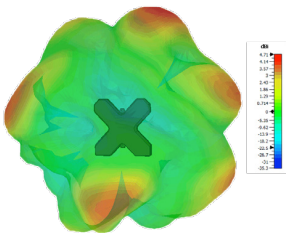
3D Pattern Element 1 (3600MHz)



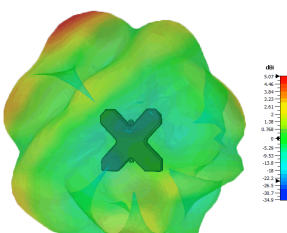
3D Pattern Element 2 (3600MHz)



3D Pattern Element 1 (5400MHz)



3D Pattern Element 2 (5400MHz)



3D patterns simulated in CST Microwave Studio excluding cable loss

Panorama Antennas Ltd
Frogmore, London, SW18 1HF, United Kingdom
T: +44 (0)20 8877 4444 | F: +44 (0)20 8877 4477
E: sales@panorama-antennas.com
W: www.panorama-antennas.com

DMM-6-60[-VAR] 03/02/2020 V4

Page 4

Waiver: The data given above is indicative of the performance of the product/s under particular conditions and does not imply a guarantee of performance. These specifications are subject to change without notice. Copyright © Panorama Antennas Ltd. All rights reserved.