

# PortStore5

## Serial RS-232 port to Ethernet with logging

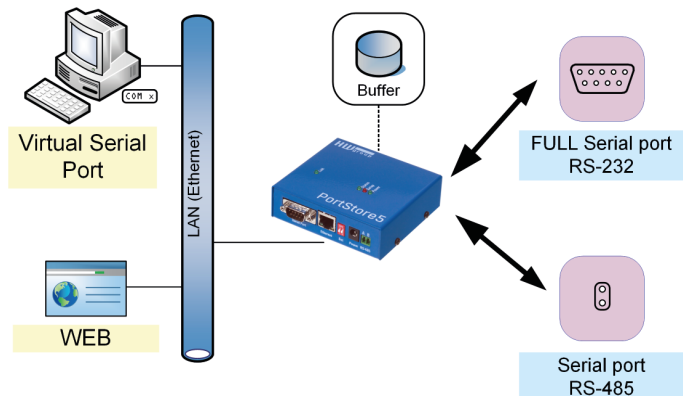
PortStore5 connects a full RS-232 or RS-485 serial port to a LAN. Features a 4 MB internal memory for capturing data received over RS-232.

Stored data can be retrieved when the LAN connection is re-established. Remote serial port can be accessed in Windows as a Virtual Serial Port

With PortStore5, you will never lose remote RS-232 data. Recommended for replacing serial printers.

The Box-2-Box mode can "tunnel" the serial port over the LAN between two devices. All 9 pins of the serial port are supported.

PortStore5 can also transfer the 9<sup>th</sup> bit (extended parity or "9-bit" transfer mode).



## Applications

Backing up a RS-232 printer output:

- Security system status
- Barcode scanners
- Scales (weighing systems)
- Weather stations

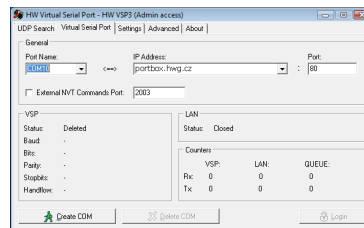
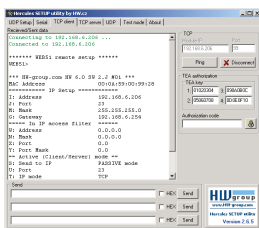
- ✓ *Serial port logger memory*
- ✓ *Full RS-232 serial port*
- ✓ *Box-2-Box mode*
- ✓ *WEB interface*
- ✓ *Virtual Serial Port for Windows*

## Basic features

- 4MB serial port logger memory
- Full RS-232 serial port (9 wires)
- Web-based configuration
- Virtual serial port for Windows, free of charge (e.g. COM17 redirected from the PC over the LAN)
- HW VSP multiport supports the full serial port and up to 100 remote serial ports
- HW VSP can be used as a "NT service" in Windows. Ideal for server applications
- HWg-SDK for programmers (contains examples of using the product in Borland C++ Builder, MS Visual C, VB, Delphi, C#, PHP, JAVA)
- Box-2-Box mode:  
Extend a full serial over the network with two PortStore5 units

## PortStore5

<b>Ethernet</b>	100 Mbit/s
<b>IP protocols</b>	ARP, UDP/IP, TCP/IP (HTTP, Telnet + RFC2217, RepBuf)
<b>RS-232</b>	Cannon DB9M (Rx/D, Tx/D, CTS, RTS, DSR, DTR, RI, CD, GND)
<b>RS-485</b>	Terminals
<b>Serial port logger memory</b>	4MB
<b>Power</b>	8-30V / 0.25 A
<b>Dimensions</b>	105 x 105 x 25 [mm]
<b>Operating conditions</b>	-10°C to +75°C +14°F to +167°F



## Accessories & related products



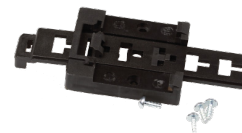
I/O Controller2



PortBox2



IP Relay



DIN Rail box set

<b>PortStore5</b>	PortStore5 quick start set: PortStore5 unit (buffer), power adapter, manual, CD, LapLink cable.
<b>PortBox2 SET</b>	Product quick start set – RS-232/485 to the Ethernet. Includes: CD, power adapter.
<b>I/O Controller2 SET</b>	Product quick start set – 8 digital inputs, 8 digital outputs + RS-232/485 to the Ethernet. Contains a CD, a power adapter and a test board
<b>DIN Rail box set</b>	DIN rail mounting bracket.
<b>IP Relay HWg-ER02b SET</b>	Quick start set – 2x relay (230V/16A) + RS-232/485 to the Ethernet, CD and power adapter.